



EOX

The eco-efficient and natively digital
elevators that add value to your buildings

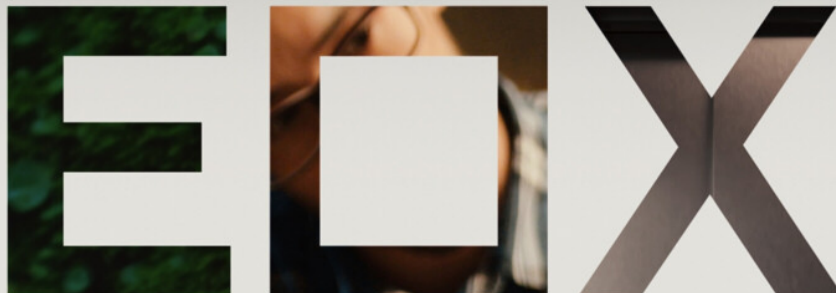
630-1.600 kg | 2.0-3.0 m/s | ≤ 120 m

SAY HELLO TO EOX

EOX is TK Elevator's eco-efficient and natively digital elevator product platform for low- and mid-rise buildings. EOX is a future-proof fusion of both the latest energy-saving and digital technologies in vertical mobility. It spells out TK Elevator's commitment to add value to your buildings: By contributing to energy efficiency **[E]** and the reduction of your carbon footprint. By putting our customers at the centre and going full circle **[O]** on today's and tomorrow's needs of everyone who designs, constructs, manages or uses a building. And by digitally transforming **[X]** the passenger experience.



Scan the QR code with your smartphone to watch the EOX product video on YouTube





EOX adds value to your buildings

The EOX platform delivers all you expect from an elevator – and beyond. It makes many premium specs a standard and is designed to be a natural extension of how we live and move in the world today: environmentally conscious, and always connected. Whether it's 2 or 40 floors, a functional residential or exclusive commercial building: EOX elevators keep your building reliably in motion, as well as providing a modern digital platform that makes everything about vertical mobility more convenient and efficient.

Overview	
Elevator type	Machine room-less with belt technology, made in Europe
Applications	Mid-rise buildings of all categories, such as premium residential, office, hotel, retail, healthcare, public buildings and education
Load	630 / 825 / 1000 / 1150 / 1275 / 1350 / 1600 kg
Speed	2.0 m/s 2.5 m/s 3.0 m/s
Travel height	Up to 120 m
Number of stops	Up to 40 stops
Cabin	Design lines C, B or A incl. custom cabin option
Door types	Side-opening with 2 panels, central-opening with 2 panels
Door opening width	900 – 1400 mm
Door height	2000 – 2500 mm
Cabin height	2200 – 2700 mm
Energy efficiency	Regenerative drive
	Standby-mode and eco-mode
Digital components	IoT-enabled and AI-ready computing hardware
	Smart sensors including in-cabin optical sensor
Passenger experience	In-cabin multimedia display with infotainment
	Elevator calls with AGILE Mobile app
Special options	AGILE Destination Controls intelligent dispatching
	Integrated access control with AGILE Access
	MAX Monitoring on premise



Table of contents

2

Say hello to EOX

9

Cabin Design

25

Operating panels
and indicators

34

Features and
options

37

Planning

41

About TK Elevator

More on EOX



EOX Planning Tool

Plan your EOX online, get
BIM and CAD files



EOX in low-rise buildings

450-2.500 kg | 1.0-1.75 m/s |
up to 75 m



EOX Renew

The eco-efficient and digital
elevator that boosts the
accessibility and value of
your existing building

EOX AT A GLANCE

EOX elevators move you in the most safe and energy-efficient ways. They're the fulfilment of TK Elevator's promise to make premium features a standard as well as boosting sustainability, eco-efficiency and digitalisation in all building categories from low- to mid-rise. EOX is TK Elevator's product platform with the broadest application scope and will fit your residential building as well as offices and hotels, retail, public buildings, healthcare facilities and hospitals. The EOX mid-rise range covers 630 to 1.600 kg, speeds from 2.0 to 3.0 m/s and up to 120 m travel height.

EOX makes premium specs a standard

Regenerative drive

Every EOX recuperates electricity from braking and feeds it back into the building for other electricity consumers to use.



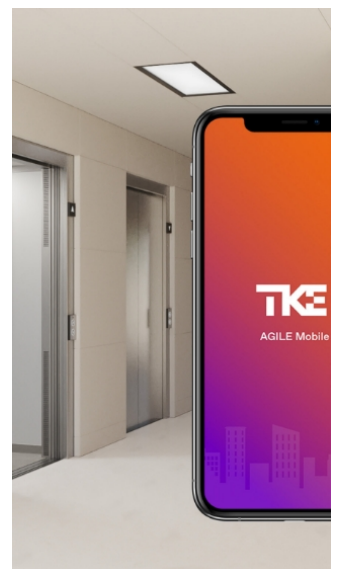
Multimedia display

The standard in-cabin screen is a 10" TFT, enriching the travel experience with animation and infotainment features.



Eco-mode

The elevator adjusts to the traffic patterns of the building and lowers its acceleration during off-peak hours.



"Swipe a ride"

Passengers can call an elevator ride on their smartphone* as an alternative to the button-operated panels.



* The **TKE AGILE Mobile** app is available for iOS and Android at the respective app stores. User authorisation for camera access and geo-location is required for remote calls.

EOX means ride comfort and smart engineering



Belt technology

The EOX powertrain is a state-of-the-art belt drive made in Germany. The machine features an ultra-compact design and gearless and frequency-controlled operation. Belt technology provides superior energy efficiency and almost vibration-free ride experience.



Controller integrated in door jamb

The ultra-compact controller is integrated into the door jamb for easy access, requiring no extra cabinet or attention during shaft construction. Optionally, external installation in a very compact cabinet is also possible.



Up to 3.0 m/s

The fastest EOX configuration with a top speed of 3.0 m/s gets your passengers from 0 to 120 metres in less than one minute and handles high-traffic situations with up to 240 connections per hour. EOX is designed for ISO 25745 usage categories 1, 2, 3, 4.



Spacious cabins

EOX can effortlessly meet the demands of modern commercial architecture in regards to spaciousness with cabin heights of up 2700 mm and corresponding door heights and door opening widths.



EN 81-72 firefighter elevator

EOX is available as a firefighter elevator in accordance with the EN 81-72 standard with up to 3.0 m/s and 1600 kg. And the best thing about it: It's still a true EOX with all the advantages of the EOX product platform.



Absolute positioning system

From 2.0 m/s onward EOX elevators come standard-equipped with a digital absolute positioning system to ensure travel safety in all situations. At 3.0 m/s the APD system of EOX is SIL3 certified.



Flexible cabin dimensions

The standard EOX cabin sizes can optionally be adjusted in 100 mm steps to ensure optimum shaft space efficiency. All EOX mid-rise cabins use sling suspension and come with car frame.



Code-compliant

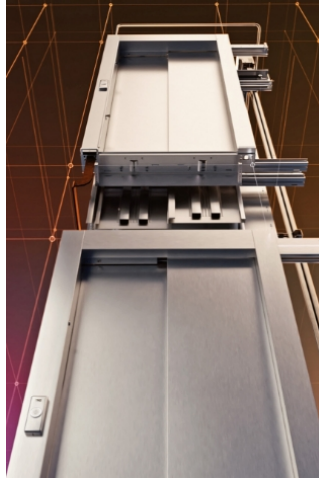
EOX is manufactured to meet all industry standards and regulations, such as EN 81-20/50 and EN 81-70 A1. EOX offers enhanced accessibility options.

EOX is energy-efficient and manufactured sustainably



Energy-saving features

In addition to the included VVVF regenerative drive, EOX features 100% LED lighting in the cabin and the shaft, and a Standby-mode that saves energy by automatically switching off components when the elevator is idle.



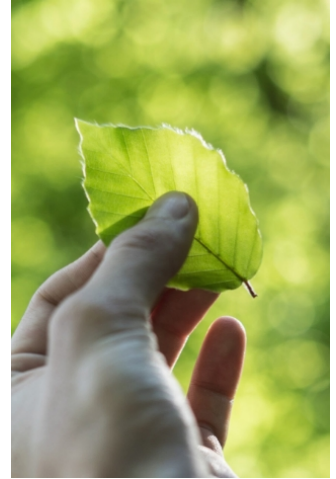
Energy consumption report

EOX owners can compile a real-life energy report via the online customer portal, showing the actual energy consumption as well as the recuperated electricity that has been fed back to the building grid via the regenerative drive.



Sustainably made in Europe

EOX achieves Class A energy efficiency*. TK Elevator's European manufacturing centres, where EOX elevators are produced, source 100% green electricity, decreasing the product's carbon footprint. For our packaging we use FSC®-certified materials.



Full eco-transparency

The comprehensive documentation for the EOX product platform includes an Environmental Product Declaration (EPD) and a Health Product Declaration (HPD). For specific installations, BREEAM reports can be created.

EOX
EPD®

Download the Environmental Product Declaration for EOX at
environdec.com/library/epd8258

* Class A certified reference elevators: 630 kg, 12 m travel height and 1.000 kg, 32 m travel height in usage category 2 (125 trips per day). The energy efficiency rating of your EOX lift depends on the specific configuration, and the conditions as well as the traffic volume in your building.



EOX is ready for tomorrow – today



Certified Cybersecurity

The EOX platform has been certified to the new Cybersecurity standard IEC 62443 / ISO 8102-20, which is crucial for maintaining the safety and reliability of critical infrastructure as well as ensuring operational continuity of elevators. The certificate means that EOX meets the latest standards for protection against unauthorised access to the lift controller and cyber-attacks.



Intelligent dispatching with AGILE Destination Controls

AGILE Destination Controls is TK Elevator's intelligent dispatching system available for EOX that makes travel faster and more convenient by directing people to the elevator that will get them to their destination in the most efficient way.



Integrated digital hardware

Native cloud connectivity and a built-in high-performance, IoT-enabled and AI-capable computing unit make EOX ready for current and future digital add-ons and services.



Intelligent sensors

EOX includes new intelligent sensors for improved safety and reliability, such as an in-cabin optical sensor and an accelerometer, which is used to monitor the motion behaviour of the cabin and the doors.



Over-the-air software updates

EOX is able to receive software updates for digital services over the air without on-site intervention.

TKE Customer Portal

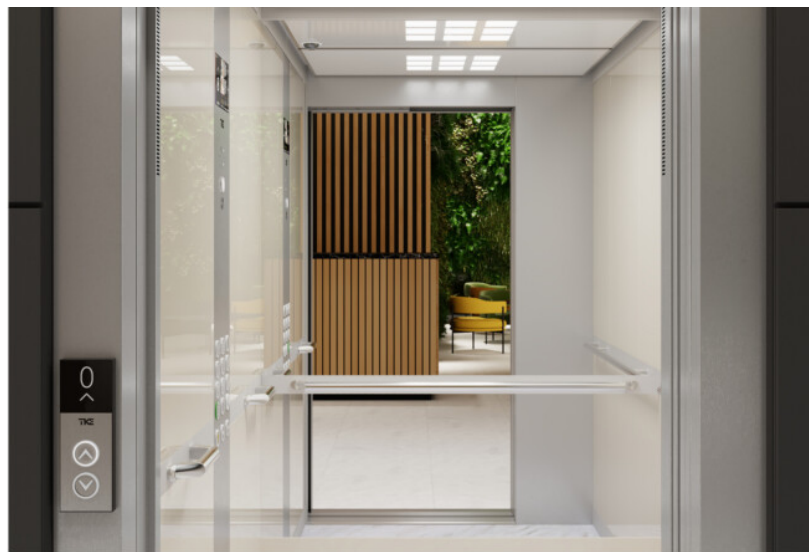
The online customer portal is the entry point to access documents, manage and view elevator performance, and subscribe to digital services. Access is free incl. a set of basic functions.

MAX Monitoring on premise

Optionally available: Our state-of-the-art solution to monitor and control EOX elevators in commercial buildings, from operations scheduling to in-depth analysis of performance data.



EOX CABIN DESIGN



Comparison overview of design lines

	Design line C	Design line B	Design line A
Cabin wall materials			
Stainless steel	✓	✓	
Melamine wood look		✓	
Colour laminate (glossy)		✓	
Wood finish laminate		✓	
Coloured safety glass			✓
Mirrors			
Mirror options for rear and/or side wall	4	5	5
Cabin without mirror	✓	✓	✓
Ceilings			
Suspended ceilings		✓	✓
Vandal-resistant ceilings	✓	✓	✓
Handrail and Skirting			
Handrail types and finishes	2	2	2
Cabin without handrail	✓	✓	✓
Skirting types and finishes	1	1	1
Flooring			
Standard vinyl floor designs	4	4	4
Customisation options			
Custom flooring	✓	✓	✓
Custom ("naked") cabin for own design		✓	
Cabin operating panels			
IL Variable	✓	✓	✓
IL Variable with black glass frontplate		✓	✓
Edge		✓	
Landing operating panels			
Series 50	✓	✓	✓
AGILE Destination Controls	✓	✓	✓
Enhanced accessibility configurations			
Second vertical COP (Edge or IL Variable)	✓	✓	✓

Design line C



Maximum functionality

Clean design, attractive and durable materials used throughout the cabin



Stainless steel wall finishes

Classic look, easy maintenance and maximum durability



Streamlined choice

Design line C combines reliability and affordability – the essences of functionality

Design line C cabins

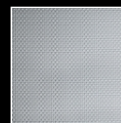
ST = stainless steel



Stainless steel



C30-ST01



C32-ST02

Cabin C30-ST01 Stainless steel brushed

Vandal-resistant ceilings available within Design line C

Unibody stainless steel suspended ceiling with integrated LED Plate. Variants with integrated trapdoor and optional ladder are available.



Steel Lightbox



Steel Grille

Handrail and Skirting

Handrails can be positioned on one or three walls. You can also order a cabin without a handrail.



Stainless steel brushed handrail



Dark Champagne handrail



Anodised aluminium skirting

Mirrors for Design line C cabins / single entrance

All mirrors are surface mounted with aluminium profile.



Partial width / partial height



Upper and lower full width ¹



Cabin without mirror

¹ Available for cabin widths >1.600 mm

Mirrors for Design line C cabins / double entrance

All mirrors are surface mounted with aluminium profile.



Upper and lower full width



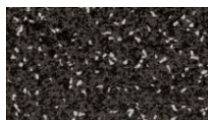
Upper full width only ¹



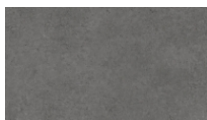
Cabin without mirror

¹ Does not conform with EN 81-70

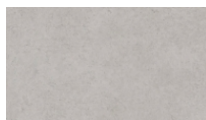
Vinyl flooring



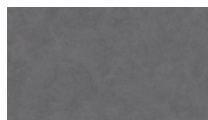
Nature Black
vinyl floor



Concrete Dark
Grey vinyl floor



Concrete Light
Grey vinyl floor



Esquissé Grey
vinyl floor



Custom floor ¹

¹ Customer-supplied flooring with recess of ≤ 25 mm

Please note: Images of cabin design elements in this chapter (ceilings, handrails, skirting, mirrors, flooring) are for illustrative purposes and may show surrounding wall finishes and cabin components that are not selectable with EOX ≥ 2 m/s.

Design line B



Colours and wood finishes

High-quality laminates in fresh colours and natural appeal wood finishes



Additional decoration layer

The wall decor forms a second layer for better noise insulation and a flush mirror design



More combination possibilities

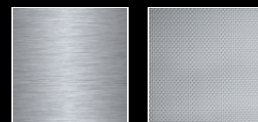
Design line B offers greater flexibility to adapt the cabin to your building's architecture

Design line B cabins

ST = stainless steel, LM-S = colour laminate (glossy), MW = melamine wood look, LW = laminate wood finish



Stainless steel



B70-ST01

B72-ST02

Colour laminate



B50-LM01S

B51-LM03S

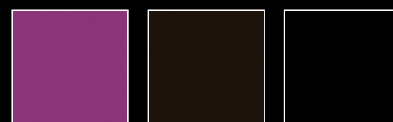
B52-LM02S



B53-LM08S

B54-LM12S

B55-LM05S



B56-LM09S

B57-LM06S

B58-LM07S

Melamine wood look



B60-MW01

B61-MW02

Laminate wood finish



B65-LW02

B66-LW03

B67-LW07

Customisation option



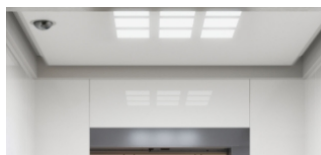
B90-custom

Suspended ceilings available within Design line B

Polycarbonate white ceiling with stainless steel frame and integrated LED lighting



Lightbox



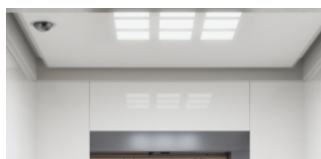
Grille

Vandal-resistant ceilings available within Design line B

Unibody stainless steel suspended ceiling with integrated LED Plate. Variants with integrated trapdoor and optional ladder are available.



Lightbox



Grille

Handrail and Skirting

Handrails can be positioned on one or three walls. You can also order a cabin without a handrail.



Stainless steel brushed handrail



Dark Champagne handrail



Anodised aluminium skirting

Mirrors for Design line B cabins / single entrance

All mirrors are flush mounted.



Partial width / partial height



Full width / mid height ¹



Full width / full height ²



Cabin without mirror

¹ With handrails on all 3 walls only. Rear wall handrail placed on stainless steel profile

² With handrails on all 3 walls only. Rear wall handrail placed on stainless steel profile

Mirrors for Design line B cabins / double entrance

All mirrors are flush mounted with handrail placed on stainless steel profile.



Upper and lower full width



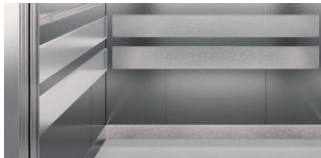
Upper full width only ¹



Cabin without mirror

¹ Does not conform with EN 81-70

Bumpers

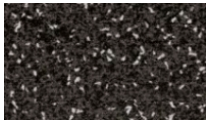


Stainless steel



Black PVC

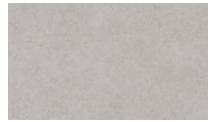
Vinyl flooring



Nature Black
vinyl floor



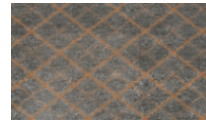
Concrete Dark
Grey vinyl floor



Concrete Light
Grey vinyl floor



Esquissé Grey
vinyl floor



Custom floor¹

¹ Customer-supplied flooring with recess of ≤ 25 mm

Please note: Images of cabin design elements in this chapter (ceilings, handrails, skirting, mirrors, flooring) are for illustrative purposes and may show surrounding wall finishes and cabin components that are not selectable with EOX ≥ 2 m/s.

Custom cabin for your own design

If you are looking for maximum individualisation of your EOX cabin design, the “naked cabin” (B90) is for you. With this option, you order a raw cabin with galvanised steel structural walls. You can then apply and install your own custom cabin design:

- wall decor panels
- mirror
- skirting
- handrail
- flooring

Please consider that some restrictions may apply in regards to materials used, the added weight to the cabin etc. Your TK Elevator sales representative will gladly advise you on the technical requirements and assist in the realisation of your custom cabin design.



Design line A



Coloured safety glass walls

The glassed walls generate stunning light reflections and make the cabin appear larger



Additional decoration layer

The wall decor forms a second layer for better noise insulation and a flush mirror design

Design line A cabins

GL = coloured safety glass



Coloured safety glass



A50-GL01



A51-GL03



A52-GL02



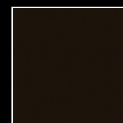
A53-GL08



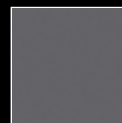
A54-GL11



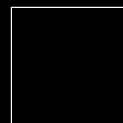
A55-GL10



A56-GL06



A57-GL13



A58-GL07

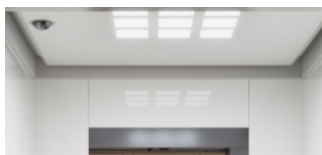
Cabin A58-GL07 Diamond Black

Suspended ceilings available within Design line A

Polycarbonate white ceiling with stainless steel frame and integrated LED lighting



Lightbox



Grille

Vandal-resistant ceilings available within Design line A

Unibody stainless steel suspended ceiling with integrated LED Plate. Variants with integrated trapdoor and optional ladder are available.



Lightbox



Grille

Handrail and Skirting

Handrails can be positioned on one or three walls, placed on stainless steel profile. You can also order a cabin without a handrail.



Stainless steel brushed handrail

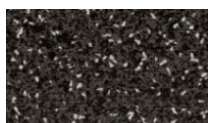


Dark Champagne handrail

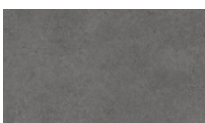


Anodised aluminium skirting

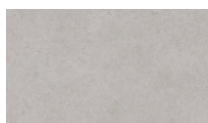
Vinyl flooring



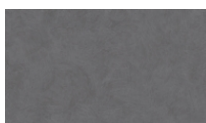
Nature Black
vinyl floor



Concrete Dark
Grey vinyl floor



Concrete Light
Grey vinyl floor



Esquissé Grey
vinyl floor



Custom floor¹

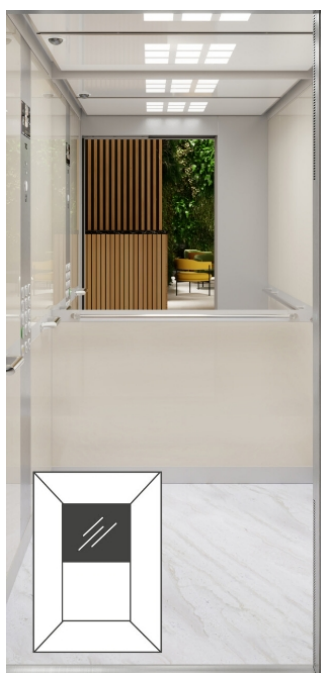
¹ Customer-supplied flooring with recess of ≤ 25 mm

Mirrors for Design line A cabins / single entrance

All mirrors are flush mounted with handrail placed on stainless steel profile.



Partial width / partial height



Full width / mid height ¹



Full width / full height ²



Cabin without mirror

¹ Available only with handrails on 3 walls.

² Available only with handrails on 3 walls.

Mirrors for Design line A cabins / double entrance

All mirrors are flush mounted with handrail placed on stainless steel profile.



Upper and lower full width



Upper full width only ¹



Cabin without mirror

¹ Does not conform with EN 81-70

Please note: Images of cabin design elements in this chapter (ceilings, handrails, skirting, mirrors, flooring) are for illustrative purposes and may show surrounding wall finishes and cabin components that are not selectable with EOX ≥ 2 m/s.

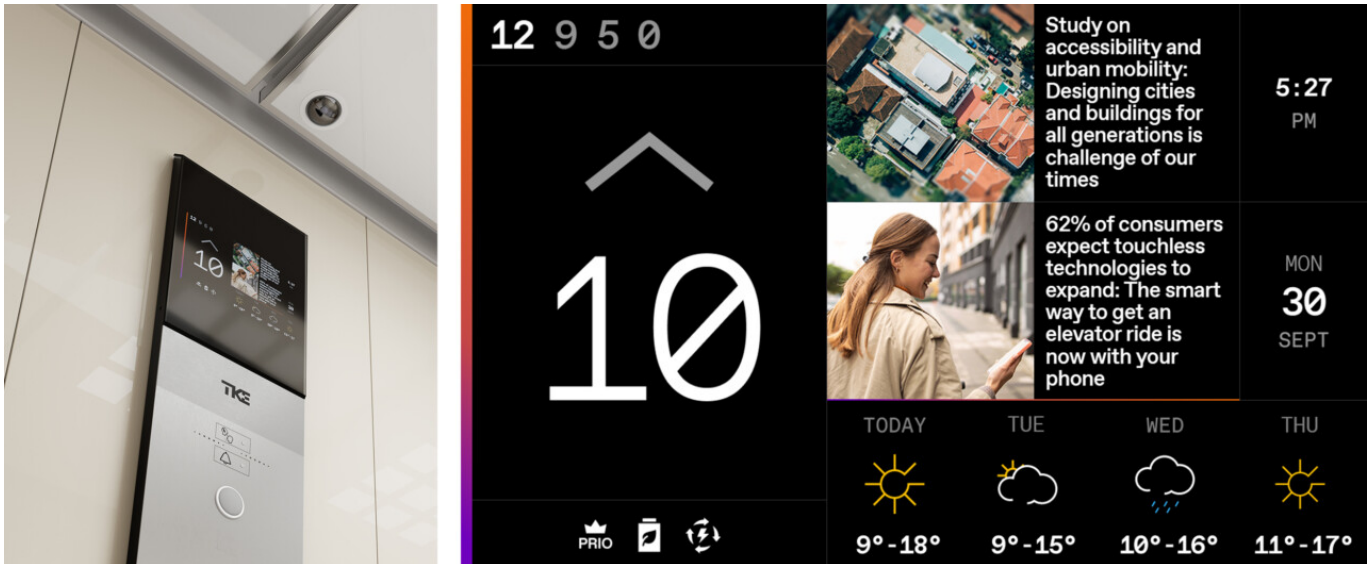
Take a 360° look inside



Scan the QR code to view this interactive content in the digital version of the brochure



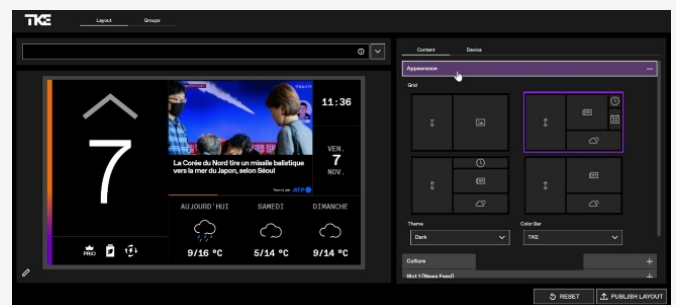
OPERATING PANELS AND INDICATORS



EOX established the in-cabin multimedia display as an elevator standard. On top of its main job, telling passengers where the elevator is travelling, the 10-inch TFT screen features a news widget with the headlines of the day and the local weather forecast. It also has a “next stops” indicator informing about the upcoming travel route. The displays can be configured with a light theme, alternative layouts or without infotainment widgets, showing just the travel information.

Screen customisation and more with TKE AGILE Infotainment Advanced

AGILE Infotainment Advanced unlocks customisation flexibility for your EOX in-cabin multimedia display. Choose from an extended range of layouts, post building messages for tenants and visitors, upload your own media, schedule content publication, and configure your own news widget categories (e.g. lifestyle, sports). Contact your TKE representative to check availability and functional scope in your region.





IL Variable cabin operating panel



IL Variable

The IL Variable is the only cabin operating panel for EOX that is embedded in the cabin wall. Its straightforward design with a single-piece stainless steel front cover, reaching from top to bottom of the cabin, has become a timeless classic. In the EOX elevator it is upgraded with a 10" multimedia display and accessibility features, such as audiovisual input confirmation, voice synthesizer and optional inductive loop for passengers with hearing aids. It can host up to 44 buttons incl. 4 or 8 auxiliary buttons and key switches. Available in stainless steel brushed or linen finish. IL Variable is available for all Design lines and also in a dual COP configuration. Dimensions are cabin height x 260 mm.

Push buttons available for IL Variable are DB series with stainless steel silver or black faceplate, and the stainless steel vandal-resistant VB series.



IL Variable with black glass finish

The IL Variable cabin operating panel is now available exclusively for Design line A and B cabins with a black safety glass frontplate for an even more elegant appearance. The specifications and capabilities remain the same as with the stainless steel variant. DB series buttons in stainless steel black are recommended.



IL Variable DSC

For EOX elevators with AGILE Destination Controls the IL Variable cabin operating panel comes with up to 8 auxiliary buttons or key switches. Learn more on the dedicated AGILE Destination Controls page.

Edge cabin operating panel



Edge

With its stainless steel front and an elegant black glass top, the Edge cabin operating panel is a popular choice for comfort and premium segment buildings. Its name is derived from the unique design with sloping top and bottom edges. The standard-equipped 10" multimedia screen is integrated seamlessly behind the glass cover. The Edge COP can fit up to 24 buttons and up to 4 auxiliary buttons or key switches. For EN 81-70 accessibility, there is audiovisual input confirmation as well as a voice synthesizer for travel announcements. Optionally, an inductive loop for passengers with hearing aids is available. Edge is available for Design line B cabins only. Dimensions are 1140×260×36 mm.

Push buttons available for Edge are DB series with stainless steel silver or black faceplate, and the stainless steel vandal-resistant VB series.



Intelligent dispatching with AGILE Destination Controls

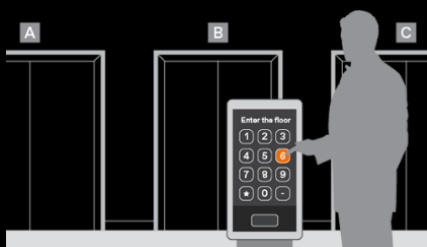
AGILE Destination Controls is TK Elevator's intelligent dispatching system suitable for groups of up to 8 EOX elevators that dramatically improves traffic flow by directing people to the elevator that will get them to their destination in the most efficient way. Derived directly from TKE's performance high-rise systems and now available for EOX, AGILE Destination Controls' algorithm groups passengers according to the floor they are travelling to, reducing the number of stops along the way for everybody. The results are up to 25% shorter ride times and an increase of up to 30% in elevator handling capacity compared to conventional systems.

AGILE's traffic algorithm not only optimises passenger flow by ensuring that people always take the lift that gets them to their destination fastest. It's also dynamically adjusted to the current building traffic status using a self-learning function that detects traffic patterns. Simply put: AGILE Destination Controls makes moving about in buildings much more efficient and enjoyable by avoiding foreseeable traffic jams and annoying situations like full cabins stopping at empty landings.



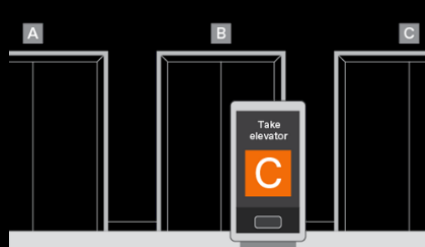
AGILE Destination Controls: How it works

STEP 1



Arriving passengers select their destination floor on the AGILE terminals at the landing

STEP 2



The dispatch algorithm calculates the most efficient route and assigns the passengers to the individual elevators, grouping them by destination

STEP 3



Passengers board their assigned elevator and are transported to their destination floors with the minimum possible stops in between

AGILE Destination Controls at the landing

Terminals with 7" or 12" touchscreen display

An AGILE Terminal may be the first thing a visitor experiences inside your building. Its elegant design and intuitive interface make sure that first impression counts and adds to your building's premium by delivering a superior passenger experience.

AGILE Terminals are available in two sizes with 7" or 12" touchscreen displays with black anodized aluminium frames with frosted silver edges. Terminals can be installed wall-mounted or free-standing on pedestals.



Scan the QR code to view an interactive version of this content with more information and product specifications

AGILE Destination Controls in the cabin



IL Variable DSC

Because passengers already input their target destination on the AGILE Terminal in the landing, the IL Variable DSC operating panel inside the elevator cabin only needs to be equipped with the essentials: up to 8 auxiliary buttons or key switches, the 10" EOX multimedia display and the standard emergency lighting and intercom. Dimensions, available finishes and push buttons are the same as with the standard IL Variable.



Next Level Indicator

The optional Next Level Indicator is a slim monochrome matrix LED display embedded in the cabin door frame showing the next stops assigned to the elevator. It aids passenger comfort and facilitates orientation, both inside the elevator cabin and at the landing.



Customisable interface design

AGILE Design Center enables customisation of the user interface on AGILE Terminals. From button styles and colours to background images, wayfinding graphics and even custom messages. Individual themes and default settings can be applied by terminal, elevator group or floor.



Combine with AGILE Access

AGILE Access provides a cyber-secured interface to connect your EOX elevator environment to 3rd party building access management systems. Swiping an ID card and placing an elevator call can then work in one go, same as restricting access for temporary visitor cards.

Series 50 landing operating panels

LOP 51

With its brushed stainless steel faceplate and black polycarbonate enclosure the LOP 51 forms the basis of TK Elevator's modular Series 50 operating fixtures. The surface-mounted landing operating panel fulfills all EN 81-70 requirements from the button luminance contrast to the acoustic input acknowledgement with adjustable volume level. Dimensions are 91×171×19 mm. Standard-equipped with round DB push-buttons, it can also be configured with (euro) key switches and vandal-resistant VB buttons.



LOP 52



LOP 52 extends the base panel with an additional module below that can accommodate either a single (euro) key switch or a push-button that can be used for special access functions. Dimensions are 91×261×19 mm.

LOP 53



LOP 53 extends the base panel with a display module on top. The glass-covered 3,5" TFT screen shows the position and travel direction of the elevator. Dimensions are 91×261×19 mm.

LOP 50



LOP 50 simply does it all by combining the base panel with the keyswitch/button extension below, and the 3,5" TFT display module on top. Dimensions are 91×350×19 mm.

Push buttons

The Series 50 landing operating panels are available with TK Elevator's popular DB series buttons with stainless steel silver or black faceplate, and the stainless steel and vandal-resistant VB series buttons.



Series 50 landing indicators

LIP 50



The LIP 50 landing indicator panel is surface-mounted on the door lintel or wall, informing passengers of the current floor level position and travel direction of the elevator via two illuminating arrows and a TFT display. Black glass front with polycarbonate enclosure. Dimensions are 260×91×19 mm.

LID 50/51



The LID 50 landing indicator panel shows the current travel direction of the elevator with arrow LEDs. It's surface mounted on the door frame or wall. Black glass front with polycarbonate enclosure. The variant LID 51 includes a gong signal. Dimensions are 91×101×19 mm.

LIDC 31



Although part of the Series 30 landing fixtures, the LIDC 31 landing direction indicator is compatible with Series 50, too. It is elegantly integrated into the door portal of the cabin, travelling with the elevator and signals the current direction to passengers by illuminating its 40 mm high up and down arrows.

Please note: Images of components on this page are for illustrative purposes and may show surrounding wall finishes and cabin components that are not selectable with EOX ≥2 m/s.



Matching design with black glass front

All Series 50 landing operating panels are also available with a black glass faceplate instead of stainless steel, allowing you to create an exact visual match with the glass-covered Series 50 indicator panels.



Enhanced accessibility configurations

EOX has been designed with accessibility in mind. It starts with the use of mechanical buttons in all our control panels, rather than touch-sensitive panels or touch screens, the ergonomic design of components such as handrails and continues with standard-included features that ensure that passengers with physical limitations or disabilities can use the elevator. In other words: Every EOX elevator fulfils the EN 81-70 norm – but you can also go way beyond these minimum requirements and enhance accessibility in your EOX elevator and your building to the highest standards.



Second vertical COP

Adding a second vertical COP improves comfort and passenger flow with very wide or very deep cabins. It ensures all passengers entering the cabin can reach their destination button. A dual COP configuration is available with Edge or IL Variable.



“Wheelchair button”

Technically referred to as extended door opening time, the “wheelchair button” can be combined with Series 50 landing operating panels or added in a separate casing next to the main LOP on the building wall. When pushed, the doors will stay open longer to allow for comfortable boarding.



Inductive loop

Fitting your EOX elevator with an induction loop will enable hearing-impaired passengers to receive audio transmissions from the voice announcement and emergency call systems directly to their hearing aid. An icon on the COP indicates the feature.

Features and options I

● Standard
○ Option

ENERGY EFFICIENCY

Regenerative drive	●
LED cabin and shaft lighting	●
Standby-mode	●
Eco-mode	●
Energy consumption report via customer portal *	●

DIGITAL FEATURES AND SERVICES *

Integrated digital hardware with IoT-enabled and AI-ready high-performance computing unit	●
Customer portal access with administrative information and basic IoT performance data overview	●
Notifications and alerts (self-service)	●
In-cabin infotainment with news and weather widget	●
Predefined layouts and themes for multimedia display	●
Monitoring dashboard	○
API-connectivity	○
Over-the-air updates for digital services	●
TKE AGILE Advanced Infotainment **	○
API to customer BMS **	○
MAX Monitoring powered by Insight (on premise) **	○

LAYOUT

Machine room-less	●
Controller integrated in door jamb	●
External slim controller cabinet in selectable floor	○
Fixed cabin dimensions	●
Flexible car dimension 100mm-steps	○
Trapdoor in ceiling with/without ladder	○
2,5 m guide rails	○
Roller guides on car and counterweight	●
Safety gear on counterweight	○

SAFETY & MAINTENANCE

In-cabin optical sensor	●
Accelerometer in door drive	●
Automatic evacuation to next landing	●
Automatic evacuation to next landing (with UPS)	○
Evacuation via emergency power supply	○
Advanced troubleshooting for service technician*	●
Remote intervention by TKE service operator**	●
Light curtain protection	●
Emergency lighting in cabin 1 h	●
VoIP-based digital emergency call system	●
Two-way intercom	●
Three-way intercom (TKE DES)	○
Three-way intercom (2N)	○
Lift warden function	○
Water sensor in pit	○
Halogen-free shaft wiring (excl. motor and travelling cable)	○
Absolute positioning system (APD)	●
Anti-bouncing device (required when TH >107 m)	●

REGULATION, CODES & STANDARDS

Doors fire rating E-120	●
Doors fire rating EW-60	○
Doors fire rating EI-60 ***	○
Doors fire rating EI-120 ***	○
EN 81-20/50, Lifts construction	●
EN 81-28, Emergency call system	●
EN 81-70 A1, Accessibility to lifts	●
EN 81-71, Vandal resistant, partially Category 1	○
EN 81-72, Firefighter lifts	○
EN 81-73, Fire evacuation (ext. signal, manual recall, dynamic evacuation up to 7 landings)	○
EN 81-77, Seismic, Category 0	●
EN 81-77, Seismic, Category 1 / 2	○

* Provision of all digital (software) services is dependent on an active maintenance contract with TK Elevator

** Please confirm the availability of this feature in your region with your TK Elevator sales representative

*** Doors fire rating EI-60 and EI-120 not available for landing doors where integrated controller is placed

The details quoted on this page can only be viewed as binding when confirmed expressly in writing.

Features and options II

● Standard
○ Option

COMFORT & ACCESSIBILITY

Door open/close and alarm push button	●
Big push buttons with braille lettering (COP)	●
Round green frame in main floor push button	●
Adjustable sound level (35-65 dBA)	●
Luminance contrast in fixtures	●
Voice announcement	●
Inductive loop (EN 81-70)	○
"Wheelchair button" in LOP for extended door opening time	○
Car ventilation fan (auto / button / key switch)	○

ACCESS CONTROL

Elevator calls with AGILE Mobile app (GPS, QR) *	●
Cancellation of calls by double click in COP	●
(Euro) key switch in COP for access/functions	○
(Euro) key switch in LOP for access/functions	○
Combined key switch + push button in COP/LOP	○
Preference/independent service of COP	○
Encoded car calls (ECC)	○
Out of service LOP	○
Preparation for card reader (LOP/COP)	○
VIP function	○
Penthouse control	○
Shabbat mode	○
TKE AGILE Access **	○

CONTROLLER

Group control system with up to 8 elevators	○
Lift out of a group	○
Uneven groups in duplex (3rd call button)	○
Full collective controller	○
Universal (Taxi)	○
Parking level at main landing floor	●
Dynamic group parking	○
Terminal deceleration control for reduced buffer stroke at 3 m/s	●
Building management system (BMS)	○
Controller, cabin light shutdown in LOP key switch	○
Pre-opening of doors	○
CCTV multimedia travelling cable	○
TKE AGILE Destination Controls **	○

CABIN DESIGN

Predesigned cabin stainless steel	●
Predesigned cabin melamine, colour, wood laminate	○
Predesigned cabin coloured safety glass	○
Suspended ("false") ceiling	○
Vandal-resistant suspended ceiling	○
Preparation for own custom flooring ≤ 25 mm	○
Custom cabin	○

OPERATING PANELS & INDICATORS

Cabin operating panels

IL Variable COP with 10" multimedia display	●
Edge COP with 10" multimedia display	○

Landing operating panels and indicators

LOP 50-53 landing operating panel, door frame or wall	○
LID 50/51 arrow indicator, door frame or wall	○
LIP 50 position indicator panel, door lintel or wall	○
LIDC 31 landing arrow indicator in cabin portal	●

Others

Vandal-resistant Edge or IL Variable COP	○
Vandal-resistant LOP	○
Second COP in cabin (Edge or IL Variable only)	○
Shared LOP for duplex	○

Options within AGILE Destination Controls

AGILE traffic algorithm	●
Terminal 7" wall-mounted	●
Terminal 7" on pedestal	○
Terminal 12" wall-mounted or on pedestal	○
IL Variable DSC COP with 10" multimedia display	●
Next Level Indicator embedded in cabin door frame	○
Lift identifier (passive)	○

LANDING & CABIN DOORS

Landing doors prime coated in RAL 7032	●
Cabin doors in stainless steel (AISI 441)	●
Landing doors in stainless steel (AISI 441)	○
Cabin / landing doors in st. steel (AISI 316)	○
Cabin / landing doors in st. steel linen (AISI 304)	○
3rd party cabin / landing doors **	○
Framed glass doors	○

* Provision of all digital (software) services is dependent on an active maintenance contract with TK Elevator

** Please confirm the availability of this feature in your region with your TK Elevator sales representative

The details quoted on this page can only be viewed as binding when confirmed expressly in writing.

EOX AS A FIREFIGHTER ELEVATOR

Buildings above a certain height require a dedicated lift that is specifically equipped to be used by firefighters during a building fire or other emergency. EOX can be configured to meet the demands of the EN 81-72 firefighter elevator standard.



Firefighter lift features

To remain operational under smoky and damp conditions, the EOX firefighter lift fulfils IPX3 protection requirements for electrical components in the shaft and the cabin. The cabin ceiling includes a 700x500 mm emergency trapdoor with an integrated telescopic ladder, allowing firefighters to exit and enter through the elevator shaft. For access control and intercom between the cabin and the landing, a special firefighter access box is supplied.

Cabin design

Stainless steel and stainless steel linen cabins from Design lines C and B. All mirror, handrail and flooring options are available. Ceiling options offered are special firefighter lift versions of the Steel Grille and Steel Lightbox ceilings. The EOX firefighter lift's IL Variable cabin operating panel and Series 50 landing operating panels come equipped with vandal-resistant VB push-buttons. In combination with AGILE Destination Controls a version of the IL Variable DSC with integrated keypad is available.

Technical scope

825 to 1.600 kg, up to 3.0 m/s, up to 120 m travel height.

PLANNING

EOX Planning Tool

The EOX Planning Tool enables building design professionals like architects, planners and consultants to quickly and easily obtain technical documents for EOX elevators that perfectly fit your project at all planning stages. Specify your EOX lift with the exact parameters and options required for your individual building design in your geographic region. Generate 2D and 3D visualisations, and download CAD files and BIM models. The browser-based EOX Planning Tool is for free and does not require user registration.



Scan the QR code to access the EOX Planning Tool or visit eox.tkelevator.com, choose a regional TKE website and navigate to “Plan and Design”

Shaft layout

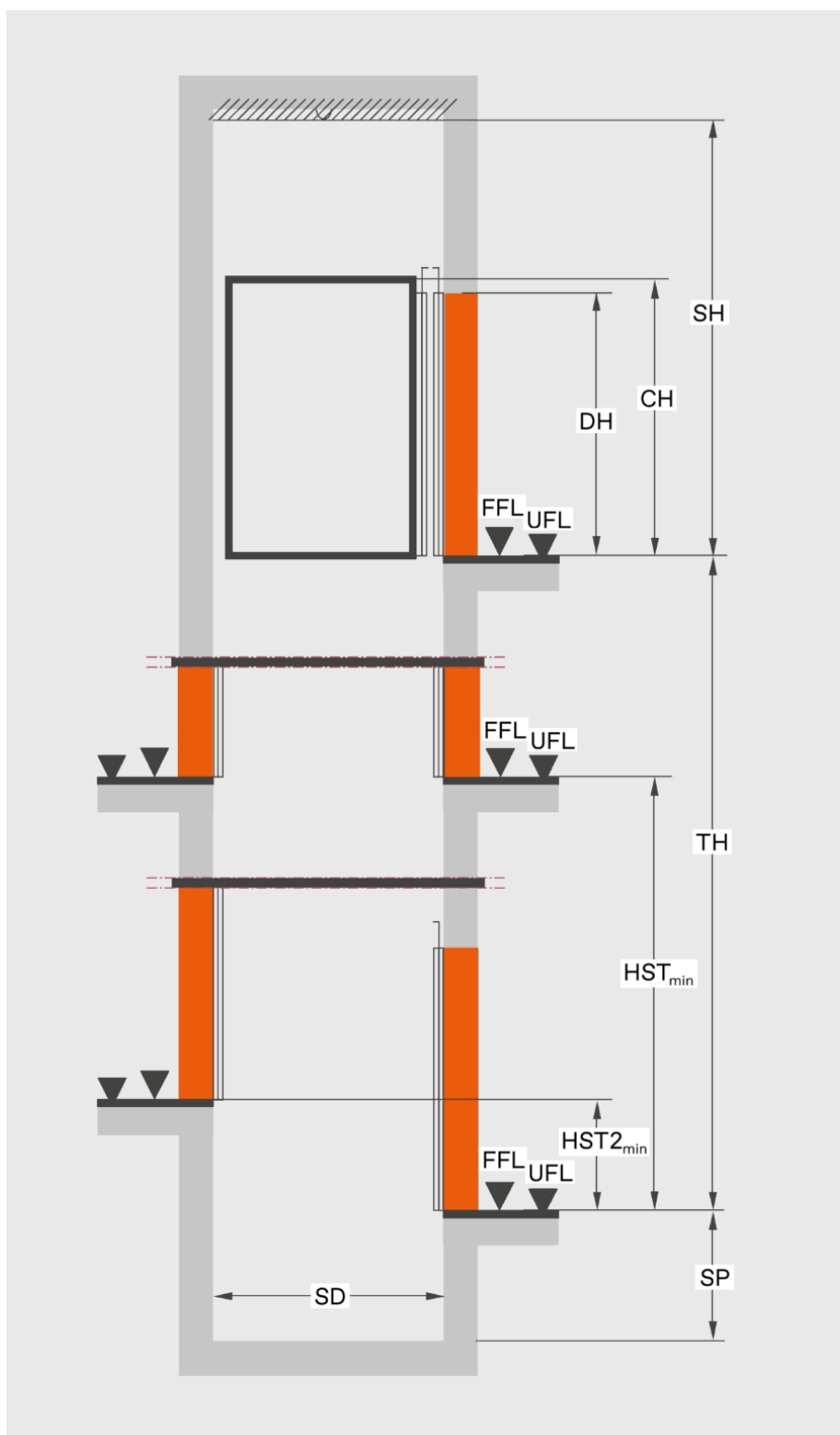
Values

SD / SW	see dimensions pages
SH	min. CH + 2170 mm
SP	min. 1325 mm
TH	max. 120 m
HST	min. DH+450 mm / max. 11 m
HST2	min. 250 mm
CH	2200 – 2700 mm
DH	2000 – 2500 mm
DW	900 – 1400 mm

Key

SD	shaft depth
SW	shaft width
SH	shaft head
SP	shaft pit
TH	travel height
HST2	min. height between floors
CH	cabin height
DH	door height
FFL	finished floor level
UFL	unfinished floor level

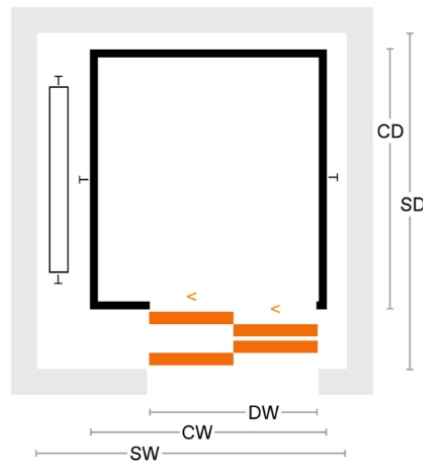
Note: All shaft dimensions with standard tolerances. The values shown correspond to a generic installation under ideal circumstances. During the planning phase, all applicable regulations stipulated by relevant notified bodies and all applicable national regulations should be considered.



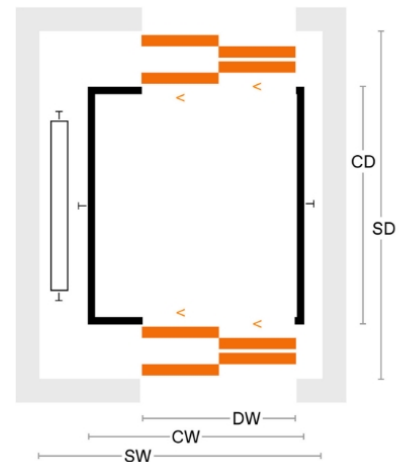
Doors

Key

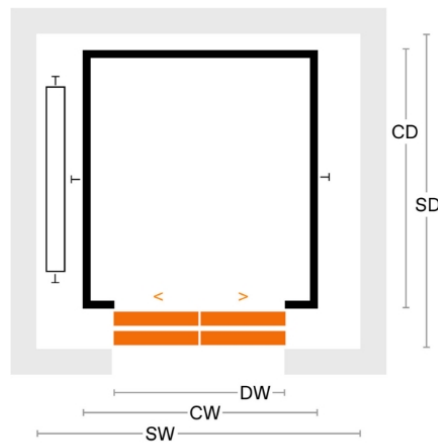
L2	side-opening door with two door panels
C2	central-opening door with two door panels
S	single entrance
D	double entrance
SD	shaft depth
CD	cabin depth
SW	shaft width
CW	cabin width
DW	door width



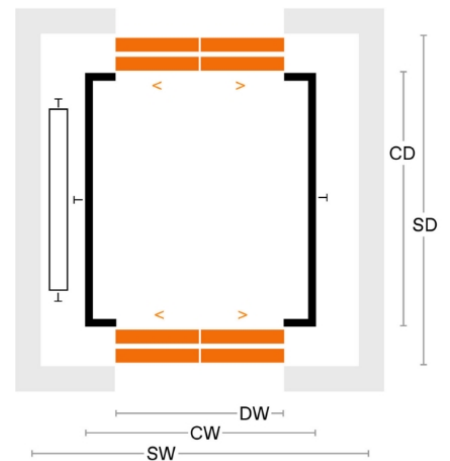
L2 / S



L2 / D



C2 / S



C2 / D

Dimensions 2.0-3.0 m/s

SYSTEM				CABIN		DOOR				SHAFT							
Rated load	Passengers	Speed	Travel height	Cabin width x depth	Cabin height	Entrance	Door type	Door width	Door height	Shaft width	SD door in recess	SD door partially in shaft	SD door in shaft	Shaft pit	Shaft head		
kg	Nº	m/s	≤m	mm x mm	mm	S/D	L2/C2	mm		mm				mm	mm		
630	8	2.0-3.0	120	1100×1400	2200-2700	S/D	L2/C2	900-1000	2000-2500								
630	8	2.0	120	1100×1400	2200	S	L2	900	2000	1795	1680	1760	1805	1325	4370		
		1000						1890									
		900						1795									
		1000						1890		1670				4600			
900	1795																
1000									1890					4700			
825	10	2.0-3.0	120	1350 × 1400	2200-2700	S/D	L2/C2	900- 1100	2000-2500								
825	10	2.0	120	1350 × 1400	2200	S	L2	900	2000	2045	1680	1760	1805	1325	4370		
		1000															
		1100															
		900						1670						4600			
		1000															
		1100															
900	1000																
1000														4700			
1000	13	2.0-3.0	120	1100 × 2100	2200-2700	S/D	L2/C2	900- 1000	2000-2500								
1000	13	2.0	120	1100 × 2100	2200	S	L2	900	2000	1725	2380	2460	2505	1325	4370		
		1000						1825									
		900						1725									
		1000						1825		1670				4600			
900	1725																
1000									1825					4700			
1150	15	2.0-3.0	120	1200 × 2100	2200-2700	S/D	L2/C2	900- 1100	2000-2500								
1150	15	2.0	120	1200 × 2100	2200	S	L2	900	2000	1825	2380	2460	2505	1325	4370		
		1000															
		900						1670								4600	
		1000															
900	1000												4700				
1275	17	2.0-3.0	120	1200 × 2300	2200-2700	S/D	L2/C2	900- 1100	2000-2500								
1275	17	2.0	120	1200 × 2300	2200	S	L2	900	2000	1825	2580	2660	2705	1325	4370		
		C2					1100	–		2545						2595	2635
		L2					900	1825		2580						2660	2705
		C2					1100	–		2545				2595	2635		
		L2					900	1825		2580				2660	2705	1670	4700
		C2					1100	–		2545				2595	2635		
1350	18	2.0-3.0	120	2000 × 1500	2200-2700	S/D	L2/C2/C4	1100- 1700	2000-2500								
1350	18	2.0	120	2000 × 1500	2200	S	L2	1300	2000	2695	1780	1860	1905	1325	4370		
		C2					1400	2990		1745						1795	1835
		L2					1300	2695		1780						1860	1905
		C2					1400	2990		1745				1795	1835		
		L2					1300	2695		1780				1860	1905	1670	4700
		C2					1400	2990		1745				1795	1835		
1600	21	2.0-3.0	120	1400 × 2400	2200-2700	S/D	L2/C2/C4	900-1300	2000-2500								
1600	21	2.0	120	1400 × 2400	2200	S	L2	1300	2000	2275	2680	2760	2805	1325	4370		
		C2					1100	2390		2645						2695	2735
		L2					1300	2275		2680						2760	2805
		C2					1100	2390		2645				2695	2735		
		L2					1300	2275		2680				2760	2805	1670	4700
		C2					1100	2390		2645				2695	2735		

All cabins use sling suspension with car frame. **Flexible cabin dimensions:** Optionally, the standard cabin dimensions can be adjusted in 100 mm steps. **Key:** (S) Single entrance. (D) Double entrance. (L2) Side-opening door with 2 panels. (C2) Central-opening door with 2 panels. (C4) Central-opening door with 4 panels. (SW) Shaft width. (SD) Shaft depth. **Note:** All shaft dimensions with standard tolerances. Dimensions in this table are valid for CH=2200 mm and DH=2000 mm with standard shaft head and shaft pit. All cabins with car frame and sling.

ABOUT TK ELEVATOR

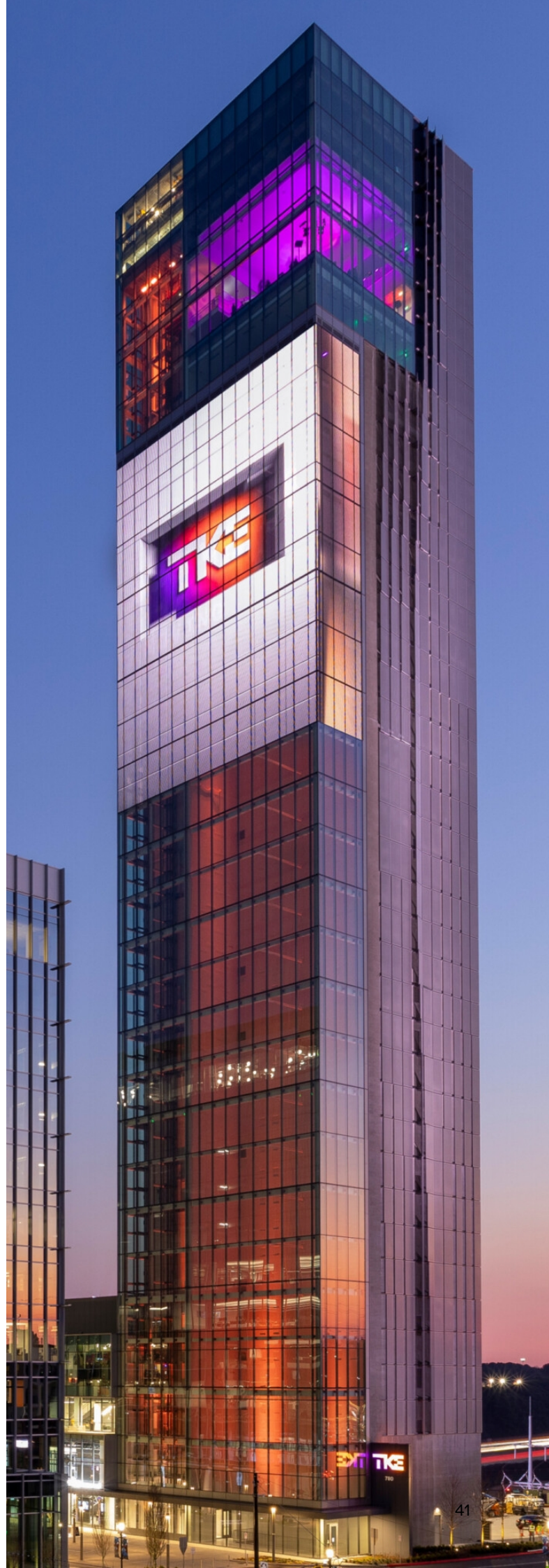
We are elevator people. Striving to move the world. Known for a passion for technology with service at the heart of our business.



Over the past decades, TK Elevator has established itself as one of the world's leading elevator companies and became independent after its sale by thyssenkrupp AG in August 2020. To our customers in over 100 countries we provide an extensive service network that guarantees close proximity, with more than 1.000 locations and over 50.000 employees. TK Elevator's most important business line is our multi-brand service for mobility solutions represented by over 25.000 service technicians.

Our new installation product portfolio ranges from commodity elevators for residential and commercial buildings to cutting-edge, highly customised solutions for state-of-the-art skyscrapers. What's more, it also consists of escalators and moving walks, passenger boarding bridges, stair and platform lifts. Integrated cloud-based service solutions are gaining in importance. These digital offerings mean there are no longer any limits to urban mobility.

TK Elevator. Move beyond.



Advancing mobility and eco-transparency

The commitment to sustainable mobility is an integral part of TK Elevator. It determines how we work – starting with product design, and extending to improved transparency and greater commitment along the entire value chain, including in production, installation, operations and maintenance. Being one of the world's leading elevator companies, we are dedicated to driving innovation and continuous improvement, all in close partnership with our stakeholders.



Our efforts are recognised by ...



CDP A-list

TK Elevator is recognised in the acclaimed A-list published by the global non-profit organisation CDP.



EcoVadis

We were awarded the EcoVadis gold medal, with TK Elevator now ranking among the top 2% of all companies currently assessed by the sustainability rating agency.



Sustainalytics

TK Elevator tops the Sustainalytics global ESG risk rating in the machinery industry category and has achieved the best result among over 500 machinery companies.



Supplier Engagement Leader

We were recognised by CDP as a "Supplier Engagement Leader" for taking action to measure and reduce environmental risks within our supply chain.



UN Global Compact

TK Elevator is a signatory of the UN Global Compact.



Global Elevator Safety Forum

TK Elevator is a co-founder of the Global Elevator Safety Forum to pursue a safe industry without accidents.



Member of RE100

We joined the worldwide RE100 (Renewable Electricity) initiative and committed to only use renewable electricity across our global operations by 2030.



The Science Based Targets

The Science Based Targets initiative approved TK Elevator's emission reduction targets as being consistent with the levels required to meet the goals of the Paris Climate Agreement.

We put our ESG commitments in writing – with full transparency

TK Elevator's sustainability report provides an overview of our progress as well as the clear commitments we have made with regard to environmental protection, social responsibility, and governance (ESG). We embrace the challenges of sustainability and are committed to leading the way in creating environmentally friendly mobility solutions. Find the TK Elevator Sustainability Report on our website.



TKE

**SUSTAINABILITY
REPORT 2023/24**



EOX.TKELEVATOR.COM

TK Elevator Europe Africa GmbH
E-Plus-Strasse 1
40472 Düsseldorf
Germany
info@tkelevator.com

EOX digital product brochure en-EA v05/06/2025 Ext1C+CL

The details quoted in this brochure can only be viewed as binding when confirmed expressly in writing. Reproduction and storage only with authorization of TK Elevator. Colours, options and specifications are subject to change. Provision of all digital (software) services is dependent on an active maintenance contract with TK Elevator. All cabin design and multimedia display options shown in this brochure are for illustrative purposes only. Samples shown may vary from the original in colour and material. Patterned samples are not to scale. Your TK Elevator contact will gladly provide you with real material samples.