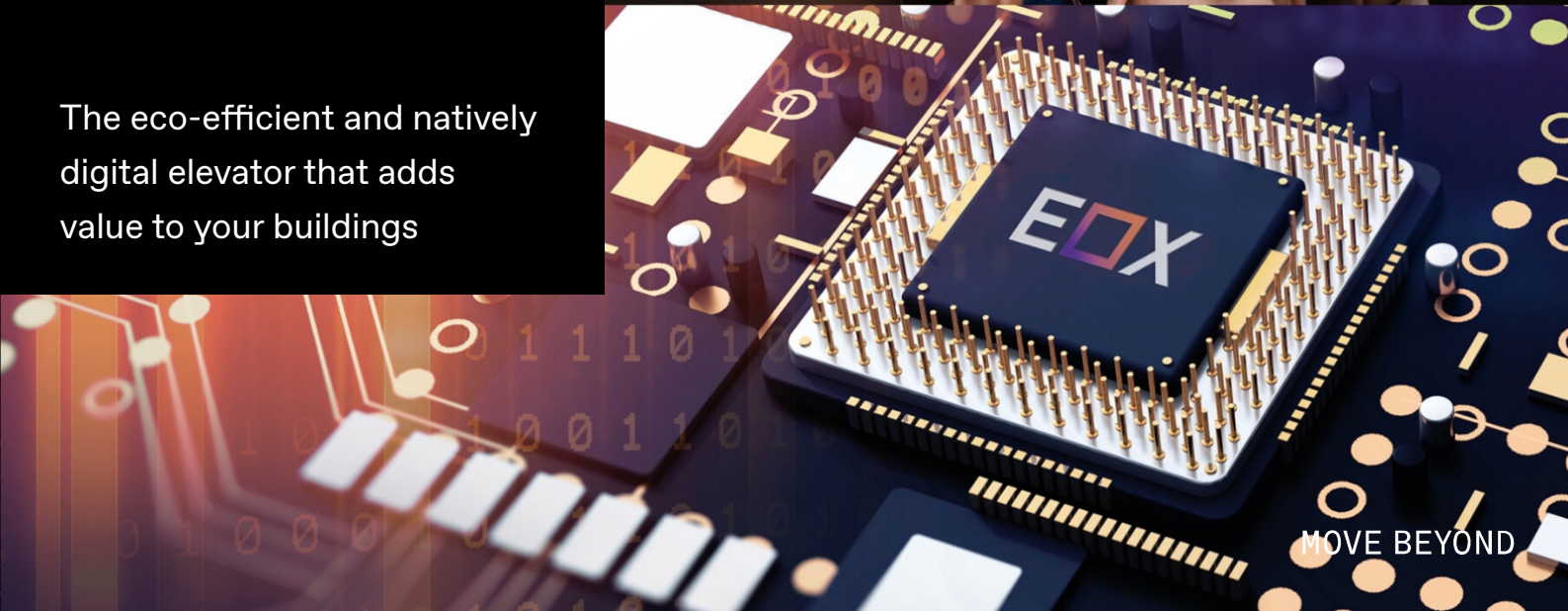
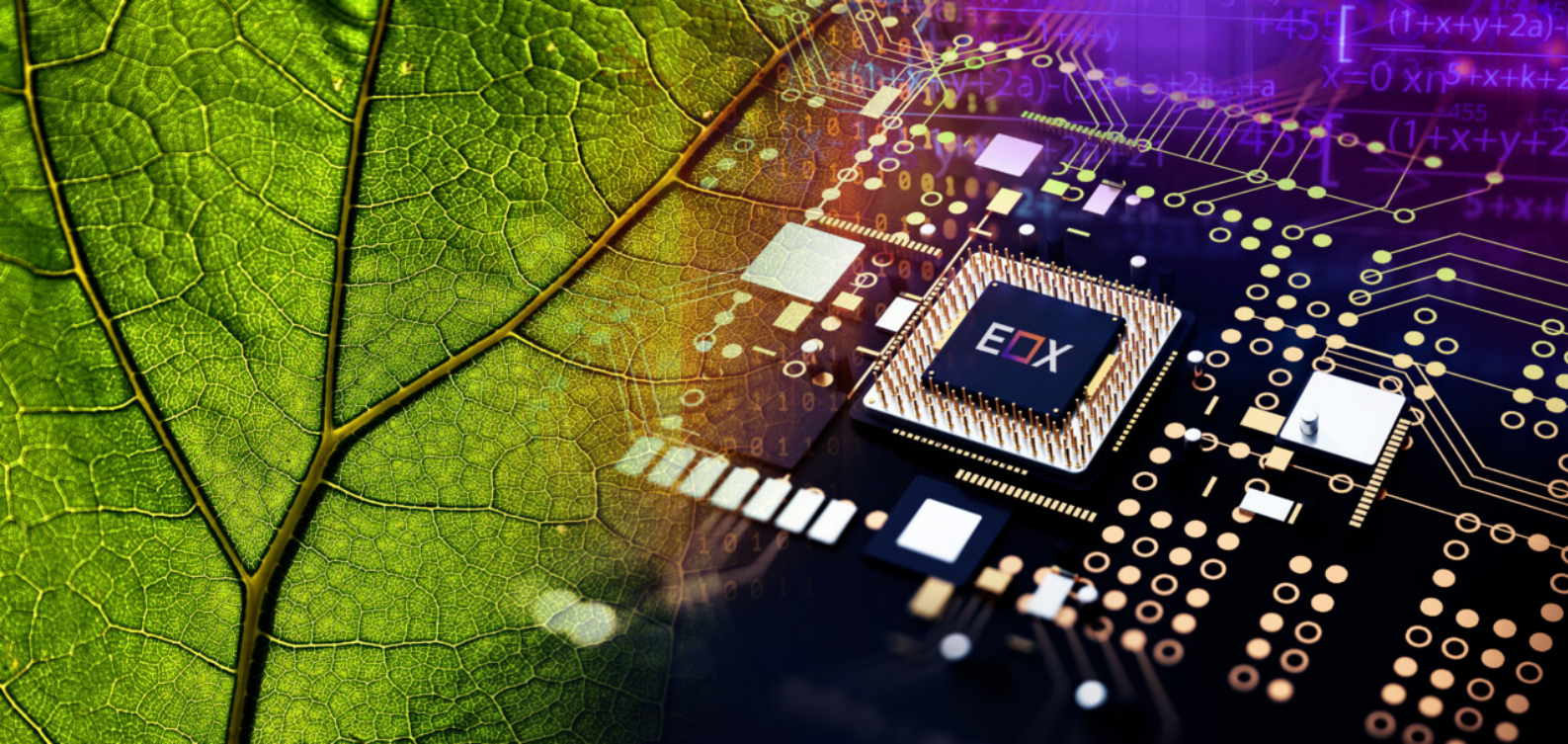




EOX

The eco-efficient and natively digital elevator that adds value to your buildings





THE EVERYDAY ELEVATOR IS FINALLY GOING GREEN AND DIGITAL

Say hello to EOX – TK Elevator’s new eco-efficient and natively digital elevator platform. EOX is a future-proof fusion of both the latest energy-saving and digital technologies in vertical mobility.

It spells out TK Elevator’s commitment to add value to your buildings: By contributing to energy efficiency **[E]** and the reduction of your carbon footprint. By putting our customers at the centre and going full circle **[O]** on today’s and tomorrow’s needs of everyone who designs, constructs, manages or uses a building. And by digitally transforming **[X]** the everyday elevator.



EOX ADDS VALUE TO YOUR BUILDINGS



EOX is all you expect from an everyday elevator – and beyond. It brings premium specs to the entry level standard. It's designed to be a natural extension of how we live and move in the world today: environmentally conscious, and always connected.

EOX is an elevator that keeps your building reliably in motion, as well as a modern digital platform that makes everything about vertical mobility more convenient and efficient.

EOX HIGHLIGHTS AT A GLANCE

Elevator technology	Machine room-less with belt technology made in Europe
	450 – 1000 kg 1.0 m/s Up to 15 stops
Energy efficiency	Regenerative drive
	Standby-mode and eco-mode
Digital components	IoT-enabled and AI-ready computing hardware
	Smart sensors including in-cabin optical sensor
Passenger experience	In-cabin multimedia display with infotainment
	Elevator calls with AGILE Mobile app
Digital services	Online customer portal access
	Over-the-air software updates
	Cloud-based smart maintenance



CONTENTS

2

Say hello to EOX

9

An eco-efficient and sustainable product

15

A natively digital mobility solution

21

A reliable everyday elevator

27

Coming soon to EOX

28

About TK Elevator

More on EOX



Launch event

Watch the official virtual product launch of EOX on-demand



Technical Factsheet

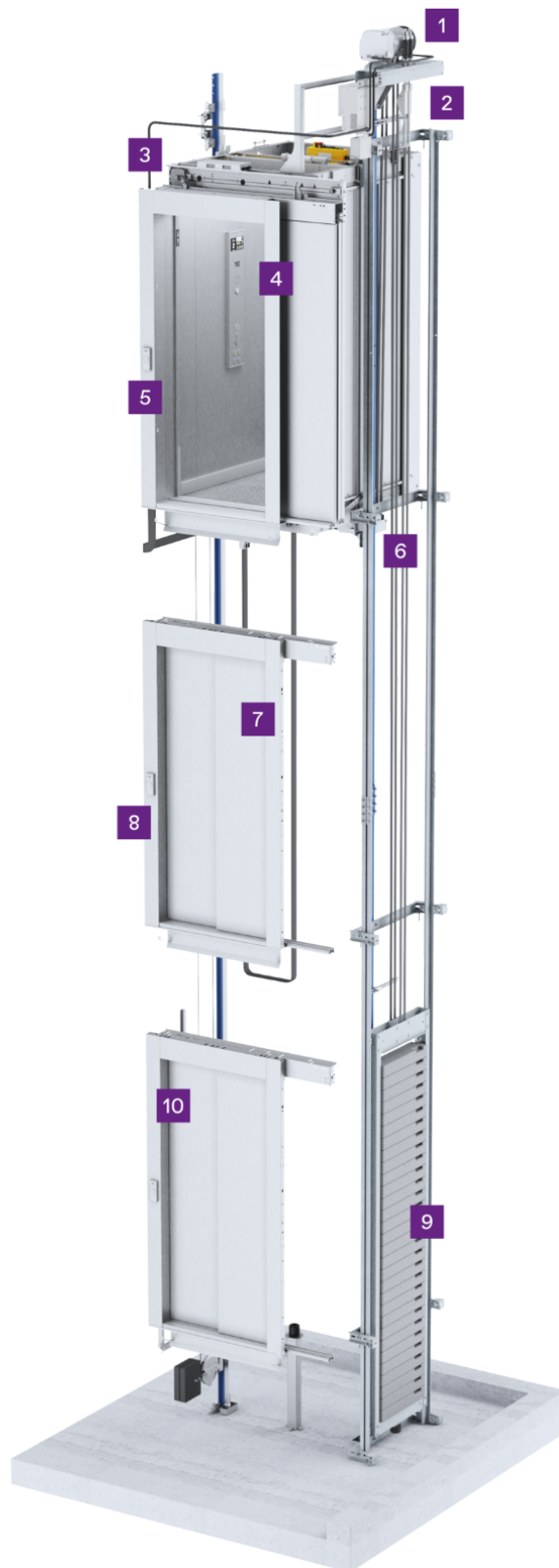
Technical information for planning and designing your EOX



Product video

Learn what EOX is all about in just two minutes of moving images

Explore EOX in 3D



1 European-made drive

The EOX powertrain is a state-of-the-art belt drive made in Europe. The ultra-compact machine is gearless and frequency-controlled. It makes for an exceptionally comfortable ride, moving passengers almost vibration-free.

2 Energy recuperation

Every EOX elevator comes with a regenerative drive as a standard feature. With this function, the elevator recovers energy during braking. When the cabin moves upwards without passengers or downwards fully loaded, energy is recuperated and fed back into the building grid for other electricity consumers to use.

3 Smart sensors

EOX introduces new smart sensors connected to its powerful digital hardware: an optical sensor in the cabin to improve passenger safety, and an accelerometer to monitor the movement of the cabin and the doors.



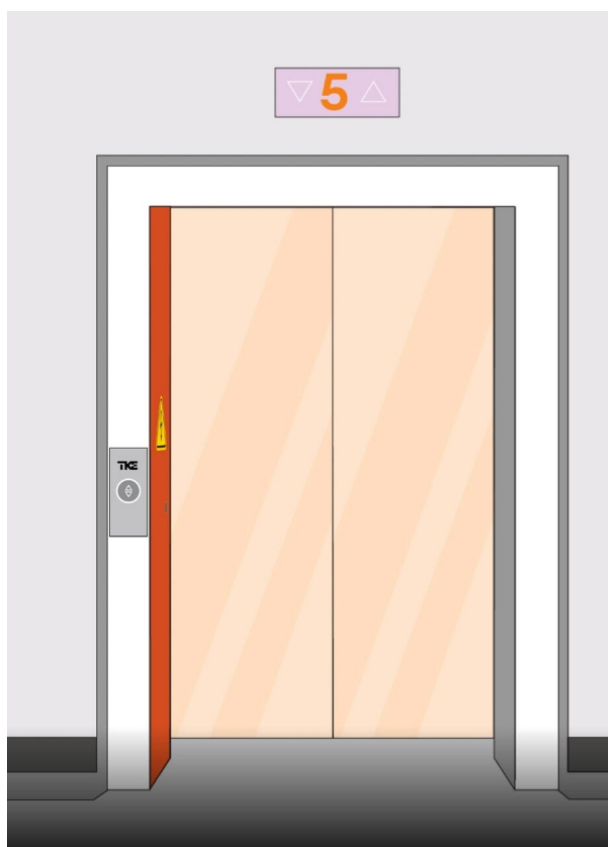
4 New design and display

EOX comes with a 7" multimedia display in the cabin. It shows animated travel directions and includes a local weather and news widget. The new cabin design features a large safety mirror and stainless steel handrail in the standard specification.



5 Controller in door jamb

The EOX elevator controller is fully integrated in the door jamb instead of in a separate cabinet. This means no extra work is needed during the construction of the shaft, the controller is easier to access during maintenance visits and it does not disturb the optics of the landing area.



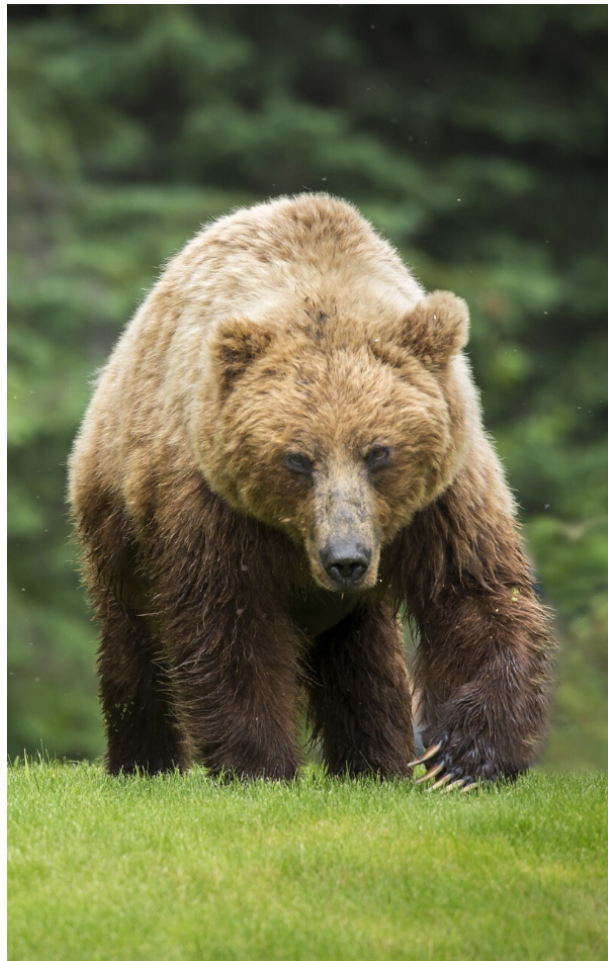
6 Sustainably made at TK Elevator's European factories

EOX is designed and produced at TK Elevator's manufacturing centres in Europe. Our elevator production sites also run on 100% green electricity, contributing to a reduction of the carbon footprint of our products from the very beginning.



9 Reduced system weight

A standard 630 kg, 5 stop EOX configuration is 300 kg lighter than previous comparable offerings, achieved with clever engineering and zero compromise on safety and reliability. For the shipping from our manufacturing centre to installation sites, this weight reduction – the equivalent of a grizzly bear – saves 10% of CO2 emissions on average.



7 Reliable doors

EOX comes with reliable shaft and landing doors that ensure smooth performance and passenger safety. The standard door type and model we equip all EOX elevators with has been tried, tested and tuned to maximum reliability on thousands of TK Elevator units all over Europe.

8 Slim and sturdy fixtures

The slim Series 30 landing operating panels feature a unibody stainless steel enclosure and are installed directly on the door frame. Buttons from TK Elevator's popular DB series come with tactile symbols and a stainless steel faceplate.

10 Optimised installation

EOX is installed with TK Elevator's safety-improved scaffold-less installation method. With its optimised packaging and pre-assembly, EOX arrives at every building site best-prepared for smooth installations.





EOX MOVES YOU
IN THE RIGHT
DIRECTION –
SUSTAINABLY

EOX saves energy and causes fewer emissions

Eco-efficiency and technology can go hand in hand, and EOX proves it. With its regenerative drive and innovative eco-mode it actively saves energy in your buildings. And thanks to clever engineering, our European manufacturing and digitally augmented services, fewer CO₂ emissions are produced because of it.

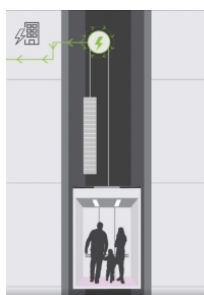
EOX also has a certified Environmental Product Declaration giving information about the environmental performance and contents, which has been controlled and verified according to the requirements of the International EPD® System. Registration number: S-P-08258.

EOX EPD®



www.environdec.com/library/epd8258

Reaping the energy benefits



Regenerative drive as a standard

With EOX, a VVVF regenerative drive is standard. Smaller and more compact than previous versions, it enables energy to be recouped when the elevator is braking, and feeds it back into the building's grid where it can be used by other elevators or electricity consumers. It's most effective when the elevator is going down fully loaded, or up with an empty cabin, ideally travelling several floors in one go.



Unique eco-mode

In addition to the standard sleep and stand-by modes, EOX has a feature unique to the residential segment – eco-mode. It “learns” traffic patterns in the building, and adjusts accordingly. During low traffic times, the elevator's speed and acceleration are reduced to 80% of nominal values (and can be further adjusted to preferences). An active eco-mode status is highlighted to passengers in the cabin display.

Green – from start to finish



Made in Europe – sustainably

EOX is produced in Europe, where TK Elevator's factories run on 100% green electricity. Sustainability is ingrained at every step of the way, including the choice of suppliers and their compliance with our Code of Conduct.



Class A certified and documented

EOX achieves Class A energy efficiency, according to ISO 25745-2. An Environmental Product Declaration (EPD) and Health Product Declaration (HPD) are publicly available.



Detailed energy report

Through the online customer portal, EOX owners can create a detailed energy consumption report of the elevator including stats about the energy recuperated through the regenerative drive.



BREEAM in a breeze

A dedicated calculator for building certificates like BREEAM makes EOX an easy candidate for your next green building project.



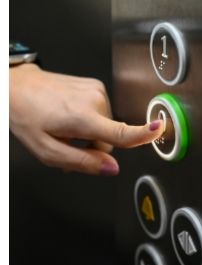


Engineering + digitalisation = reduced emissions



Less fuel for transport

A standard 630 kg, 5 stops EOX configuration weights 300 kg less than our previous comparable offering. This engineering achievement is the equivalent of the weight of a grizzly bear; shipping a bear less with every elevator will result in 10% less fuel needed for the average transport from our factory to a construction site.



Reduced energy consumption

Because EOX is lighter and packed with energy-saving features such as the regenerative drive and unique eco-mode, it will consume up to 28% less electricity to move the cabin up and down in low-rise residential buildings with typical traffic volumes.



Fewer unscheduled visits

While we have initiated the move to electric and hybrid vehicles, the most effective saving is the trip not taken. Thanks to our cloud-based smart maintenance which is proven to actively prevent breakdowns, EOX means an up to 50% reduction in unscheduled visits by our service technicians.

Please note: All comparisons regarding energy and weight reductions are made with TK Elevator's previous standard configuration for elevators in the same segment. Carbon footprint reduction refers to embodied carbon.

Advancing mobility and eco-transparency

The commitment to sustainable mobility is an integral part of TK Elevator. It determines how we work – starting with product design, and extending to improved transparency and greater commitment along the entire value chain, including in production, installation, operations and maintenance.

Being one of the world's leading elevator companies, we are dedicated to driving innovation and continuous improvement, all in close partnership with our stakeholders.

Learn more about TK Elevator's ESG efforts



www.tkelevator.com/global-en/sustainability



Our efforts are recognised by...



CDP A-list

TK Elevator is recognised in the acclaimed A-list published by the global non-profit organisation CDP.



EcoVadis

We were awarded the EcoVadis gold medal, with TK Elevator now ranking among the top 5% of all companies currently assessed by the sustainability rating agency.



Sustainalytics

TK Elevator tops the Sustainalytics global ESG risk rating in the machinery industry category and has achieved the best result among over 500 machinery companies.



UN Global Compact

TK Elevator is a signatory of the UN Global Compact.



Supplier Engagement Leader 2021

We were recognised by CDP as a “Supplier Engagement Leader 2021” for taking action to measure and reduce environmental risks within our supply chain.



Global Elevator Safety Forum

TK Elevator is a co-founder of the Global Elevator Safety Forum to pursue a safe industry without accidents.



Member of RE100

We joined the worldwide RE100 (Renewable Electricity) initiative and committed to use renewable electricity only across our global operations by 2030.



The Science Based Targets

The Science Based Targets initiative approved TK Elevator’s emission reduction targets as being consistent with the levels required to meet the goals of the Paris Climate Agreement.

We put our ESG commitments in writing – with full transparency

TK Elevator’s sustainability report provides an overview of our progress as well as the clear commitments we have made with regard to environmental protection, social responsibility, and governance (ESG). We embrace the challenges of sustainability and are committed to leading the way in creating environmentally friendly mobility solutions. Find the TK Elevator Sustainability Report on our website.





EOX UPGRADES MOBILITY IN BUILDINGS – DIGITALLY

EOX is ready for tomorrow – today

Nothing is predictable but change, and as your needs and preferences evolve, EOX moves with you. It is born digital – connected to TK Elevator’s evolving ecosystem of digitally augmented services, and equipped with the hardware to support future developments, even those as complex as artificial intelligence and machine learning. For that, TK Elevator has collaborated with two leading players in cloud computing and high performance hardware, Microsoft and NVIDIA.

What is for sure: the days when the functional scope of an elevator had to be fully specified even before it was installed in your buildings are now gone.

Embedded intelligence



Built in partnership with the best

Powered by cloud and software development infrastructure from Microsoft and high-performance accelerated computing from NVIDIA, EOX has all the components needed for digital expansion from day one. This minimises on-site visits required for future enhancements, and gives you the confidence that your elevator will remain up-to-date for years to come.



Smart sensors and real-time analysis

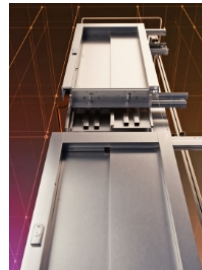
Smart sensors embedded throughout the elevator collect and transmit data in real time for advanced performance monitoring and analysis. This ensures that potential problems are identified and solved before they occur. For example, an accelerometer in the door monitors the motion behaviour of the cabin, and can help quickly address any door obstructions.

“Click & go” upgrades



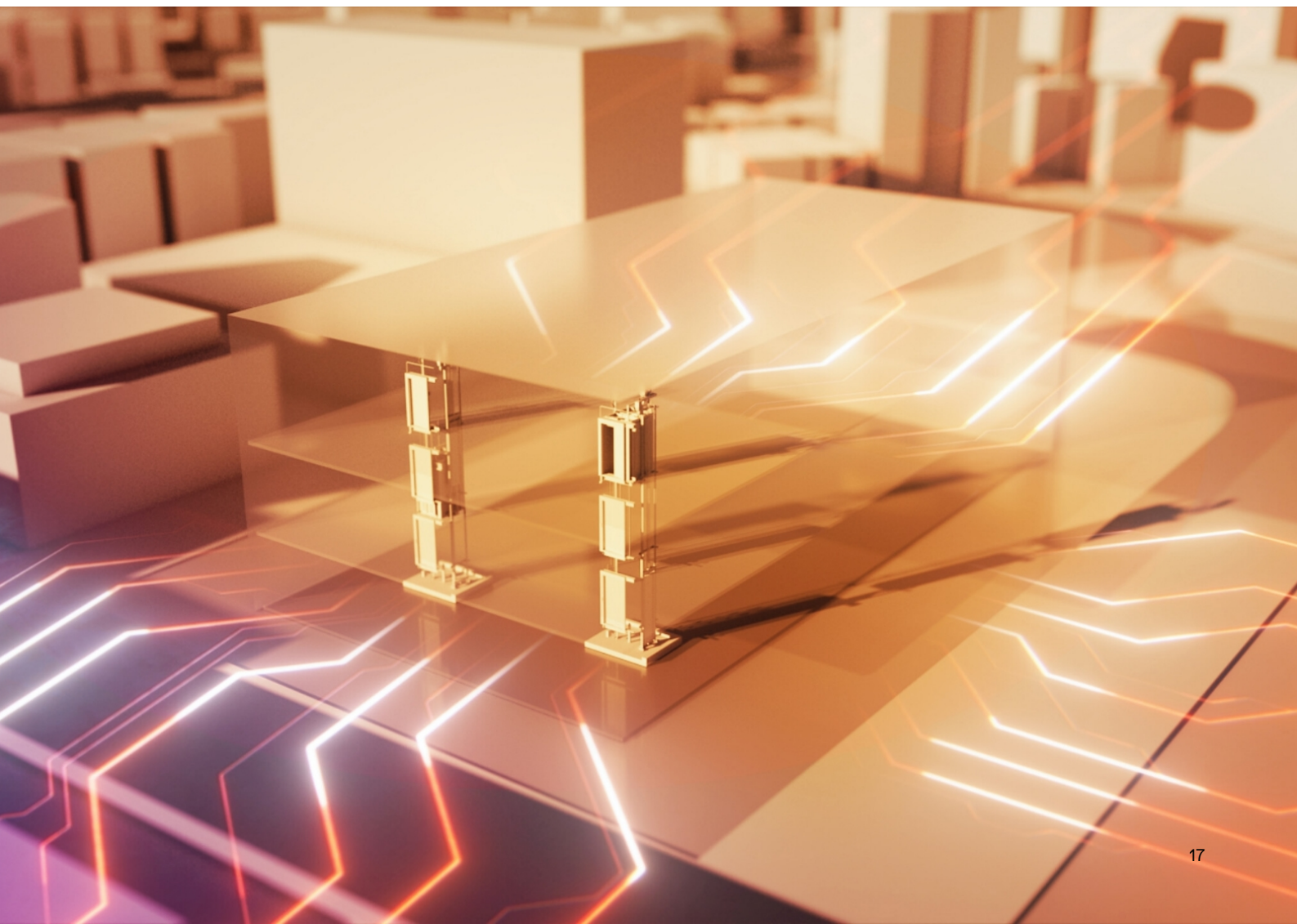
An entire ecosystem at your fingertips

Dealing with elevators is likely just one of many tasks on a building owner or facility manager's to-do list. With EOX, deciding on a digital expansion of its functional scope or a digital add-on is a nearly “click and go” experience via the customer portal. Meaning, you get things done quickly, and can then go about the rest of your business.



Always up to date – over the air

You can be sure that your elevator's digital components are always current with the latest software, with no manual interventions required on-site. Similar to your smartphone, EOX is all set for over-the-air updates.

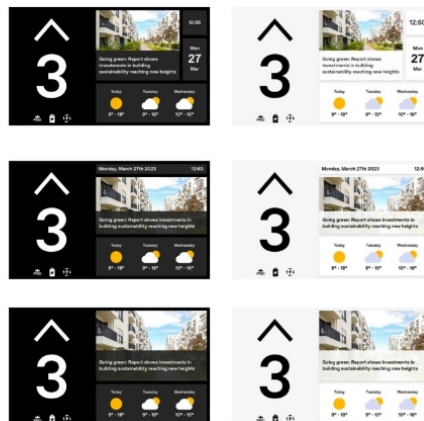


A screen that makes all the difference

From our phones to computers to televisions, we're used to vivid, dynamic content. Why should our elevators be any different? That's why every EOX comes with an in-cabin multimedia display.

On-board infotainment

Previously reserved for the comfort and premium segment, EOX now establishes the in-cabin multimedia display as an entry level standard for the everyday elevator. On top of its main job of telling passengers where the elevator is going, the 7" screen also comes with dynamic infotainment widgets. To make passengers aware that they are participating in a "green" trip, the eco-mode or regenerative drive icons appear in the display when in use.



Themes and layouts

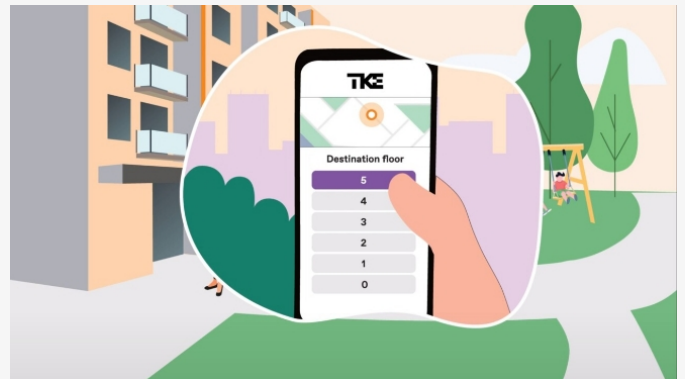
The display's most basic configuration consists of a building name or address and a predefined background image. In addition to animated operational information such as the floor position and direction of travel, the standard layout with infotainment also includes the date, time, local weather forecast, and a news widget, all of which come in a set of three pre-defined layouts and two themes.

“Swipe a ride” with your smartphone

Via TK Elevator’s AGILE Mobile smartphone app*, EOX enables passengers to easily call the elevator remotely as a comfortable alternative to the push buttons in the car panel and on the landing. It’s another standard feature that makes premium-specs the norm, and there are two options to enable smartphone calls for passengers in the building: GPS-based or with the additional help of QR-codes.

AGILE Mobile GPS

The building is verified via geo-location, and the passenger indicates the pick-up and destination floor. When they arrive at the elevator, it will be waiting to take them to their destination without them having to do anything else (e.g. push a button inside the cabin).



AGILE Mobile with QR code

The building is verified via a smartphone scan of a QR code at the landing area, and a geo-location tag provides additional verification. With the scan, the location floor is automatically selected and the passenger only has to select a destination building. QR codes are created by authorised building administrators via a customer portal.

* The AGILE Mobile app will soon be available for iOS and Android through the respective app stores. User authorisation for access to camera and geo-location is required to execute remote calls.

Your gateway to EOX

The customer portal is really the heart of EOX when it comes to managing your new elevator. It serves as a single point of entry for all of TK Elevator's digital products and services. Ensuring secure access via a personal account and customisable set up, it is an intuitive and practical tool to help you manage your elevator portfolio. At a glance, the portal offers:



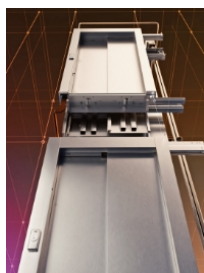
Portfolio overview

The portfolio overview shows an overview of performance and IoT data of all your natively digital or connected elevators



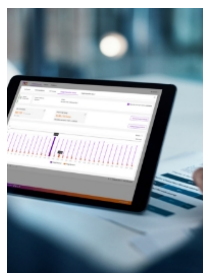
Performance activity

The performance activity chart shows a year-long overview of maintenance, repair and troubleshooting activities per unit



Unit analysis

The unit analysis provides in-depth historical health and traffic analytics based on operational data (e.g. days without repair) and IoT data (e.g. door movements)



Reports, subscriptions and alerts

Through the portal, you can also generate reports (e.g. on energy consumption), manage and book subscriptions and set notifications and critical alerts



EOX KEEPS ALL
YOUR BUILDINGS
IN MOTION –
RELIABLY

EOX means quality and engineering made in Europe

Beyond its advanced eco-efficient features and natively digital system architecture, EOX is still a reliable everyday elevator that keeps your buildings in motion. Designed by global experts and produced in Europe by experienced engineers and a skilled manufacturing workforce, EOX makes no compromises on the high-quality product design and safety standards TK Elevator is known for.



Manufacturing
Produced in Europe with quality and experience



Cabin interior
Durable materials and “no nonsense” design



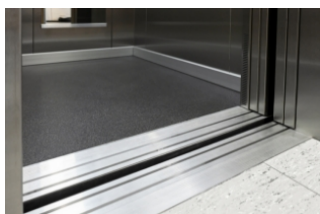
Operating panels
Fixtures and buttons with stainless steel surfaces



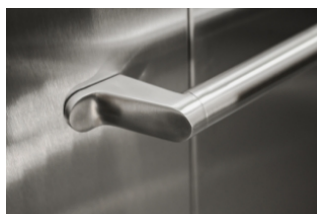
Signalisation
Landing direction indicator in the door portal



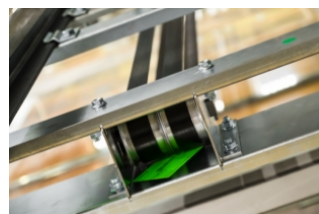
Controller
Ultra-compact and integrated in the door jamb



Ride quality
Vibration-free ride and precise levelling



Accessibility
EOX fulfils the EN 81-70 standard



Belt technology
Low vibration and high energy-efficiency

Take a 360° look inside



Explore this interactive content in the digital version of this brochure

Getting your EOX on site, up and running

Improved order-to-delivery processes at our factories enable a confirmed elevator configuration to be sent directly to production via a touchless order system. In the near future, we will be able to get from ready-to-order to ready-to-ship in just 20

working days. Optimised packaging and pre-assembly processes also result in an up to 50% reduction in the time required to get EOX delivered and installed. All of which gives you better build-site flexibility, and improved cost control.



Project partnership

Partnership-based project management

We believe in implementing project management the way it should be – holistically, functionally and together with our customers. We find suitable solutions that combine comfort, safety and efficiency to your advantage. But our expertise goes beyond just technical solutions. It extends to our people, their in-depth experience, and our global reach – all of which can benefit you. From planning to commissioning and every step along the way, you will work closely with one of our highly qualified project teams, managed by experienced project managers.

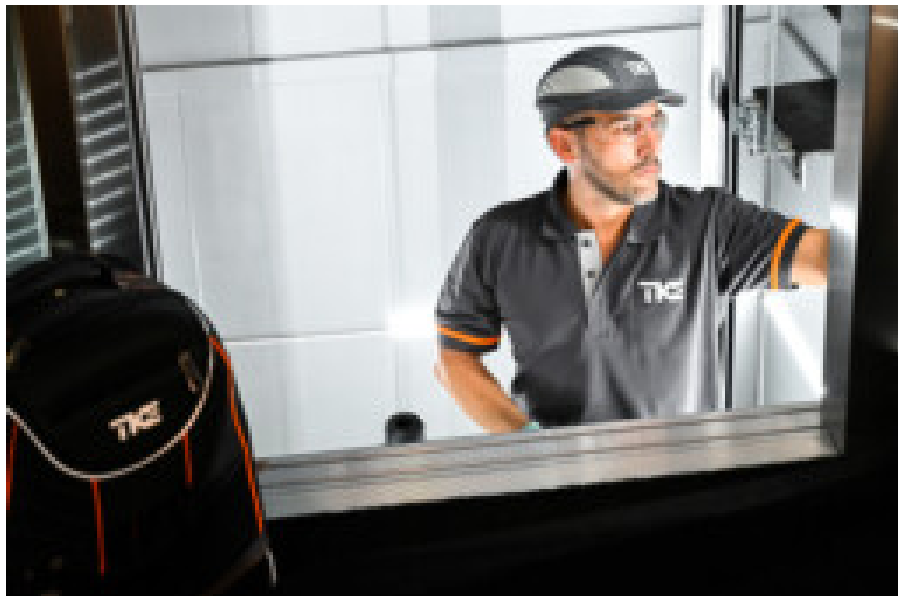


Our teams are trained in the latest installation methods to ensure high-quality, safe and punctual installations. We are always optimising our processes to further guarantee the value, quality and longevity of our installations, e.g. through the development of our own installation tools.



High-quality installations

Punctual, and optimised for your planning



Safety first!

Always safe, always compliant

We ensure that all our employees are certified to code and trained in the latest safety regulations, thereby minimising on-site risks. We provide:

- Up-to-date and standardised safety rules worldwide
- Safety training for all team members, including subcontractors and managers
- Regular safety update meetings with the team and general contractor
- Improved scaffold-less installation method (approved by safety managers for each new product)
- Safety inspections on the construction site



Please note: All comparisons are made with TK Elevator's previous standard configuration for elevators in the same segment.

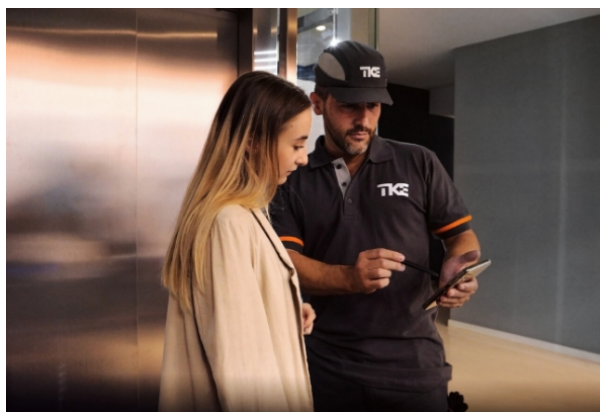
Smart and easy maintenance

TK Elevator's cloud-based smart maintenance – for which EOX comes “plug and play”- ready – provides intelligent data analytics packaged to fit your service needs. It results in enhanced service quality, less paperwork, real-time equipment transparency and increased peace of mind.



Through its smart sensors and connected components EOX can collect real-time data to calculate the remaining lifetime of each of the elevator's key components, determining which parts will require maintenance, a readjustment, a repair or a replacement – and when. Door movements, speed, number of trips and power-ups, car calls – all this and more is aggregated and sent to the cloud where algorithms analyse it for patterns and determine the “health” of your elevator. This data-driven approach has the power to cut elevator downtime by up to 50%. And the best thing about it: It's at the fingertips of all parties involved – the owner or a building manager as well as the service technician in charge of the elevator.

Independent of the type of maintenance contract with TK Elevator, every EOX owner benefits from **advanced troubleshooting** as well as **notifications and critical alerts**. Performance data and diagnostics delivered to our technicians in real time indicate where intervention is required. The pre-defined notification contacts are also informed about any incidents. What does that mean for you? Maximum transparency, fewer unscheduled visits, quicker clearing of breakdowns or malfunctions and increased uptime for passengers and tenants.



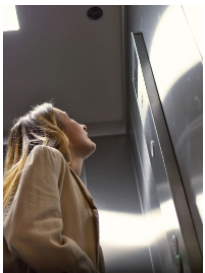
TK Elevator was the first to introduce the elevator industry to a fundamental shift from reactive to proactive maintenance. With EOX, this is now a standard for even the most basic everyday elevators. Our first mover advantage combined with cutting-edge cloud technology, IoT connectivity and Big Data analysis gets you more transparency, prolonged lifetime for your units, and enhanced safety and reliability for your passengers.

What's up next for EOX?

EOX adds the most value to your building through its built-in ability to change with your digital needs over time. Because it comes ready-made to adapt to your future choices. That means constant over-the-air updates and upgrades. That means smart

maintenance. And that means access to additional digital services on-demand – from infotainment add-ons to premium maintenance. All of which meet the needs of your building as its purpose and function evolves.

Which means: The future has a lot in store for EOX. For example...



Advanced emergency services

Advanced emergency services will include video and chat communication from the cabin to our 24h service centres, as well as remote interventions.



Remote monitor & control

Advanced features to better analyse elevator performance in real time, as well as remotely monitor and control units for scheduled actions.



API connectivity

An open platform for Application Programming Interfaces to connect EOX with user applications and building management software.



Customised infotainment

Enhanced infotainment options will enable you to have full control over the display's content, visual theme as well as the extension to announcements or ads.

About TK Elevator

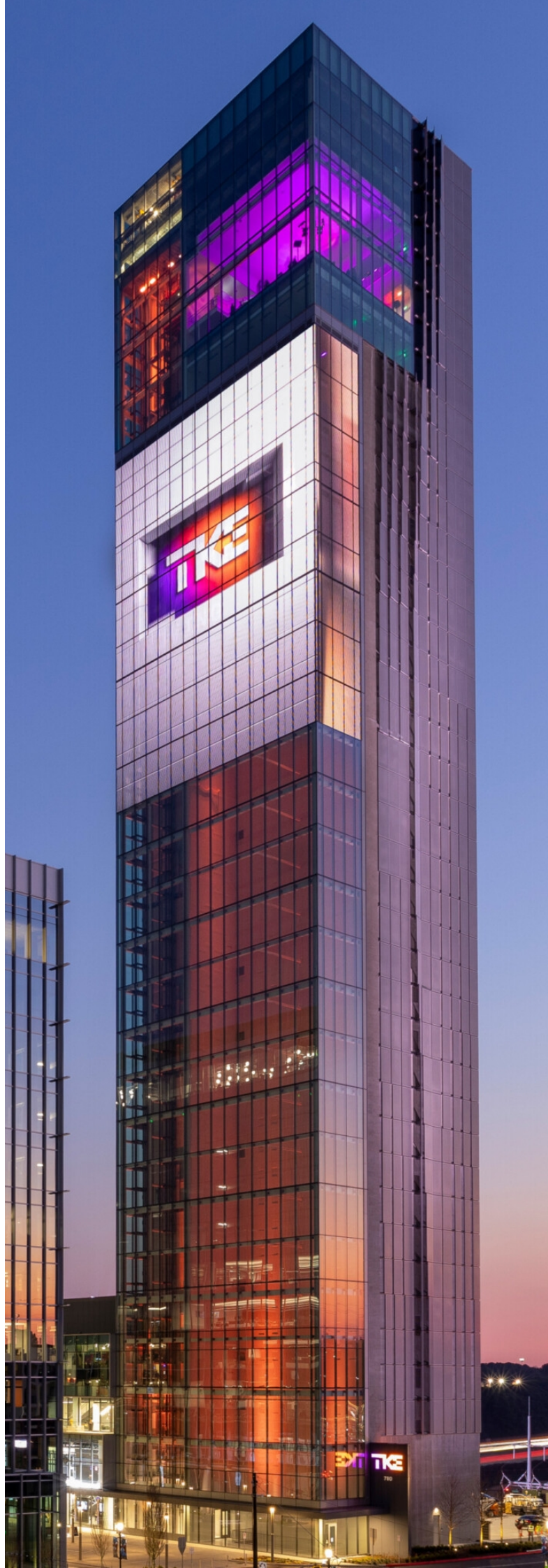
We are elevator people. Striving to move the world. Known for a passion for technology with service at the heart of our business.



Over the past decades, TK Elevator has established itself as one of the world's leading elevator companies and became independent after its sale by thyssenkrupp AG in August 2020. To our customers in over 100 countries we provide an extensive service network that guarantees close proximity, with more than 1,000 locations and over 50,000 employees. TK Elevator's most important business line is our multi-brand service for mobility solutions represented by over 24,000 service technicians.

Our new installation product portfolio ranges from commodity elevators for residential and commercial buildings to cutting-edge, highly customised solutions for state-of-the-art skyscrapers. What's more, it also consists of escalators and moving walks, passenger boarding bridges, stair and platform lifts. Integrated cloud-based service solutions are gaining in importance. These digital offerings mean there are no longer any limits to urban mobility.

TK Elevator. Move beyond.





EOX.TKELEVATOR.COM

TK Elevator Europe Africa GmbH
E-Plus-Strasse 1
40472 Düsseldorf
Germany
info@tkelevator.com

EOX digital brochure en-EA v01/06/2023

The details quoted in this brochure can only be viewed as binding when confirmed expressly in writing. Reproduction and storage only with authorization of TK Elevator. Colours, options and specifications are subject to change. Provision of all digital (software) services is dependent on an active maintenance contract with TK Elevator. All cabin design options illustrated in this brochure are for illustrative purposes only. The samples shown may vary from the original in colour and material. Patterned samples are not to scale. Your TK Elevator contact will gladly provide you with real material samples.